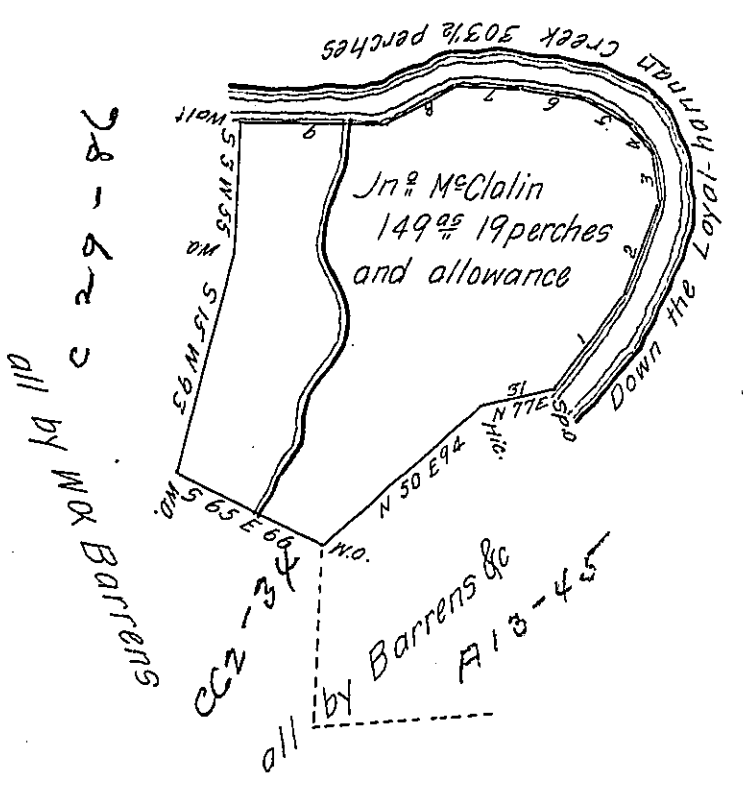


No of Courses	Courses Down the Loyalhannan	Distances &c
1	N 38 E	50
2	N 21 E	43
3	N 7 W	18
4	N 37 W	15
5	N 66 W	23
6	N 82 W	27
7	N 84 W	26
8	N 61 W	38
9	S 89 W	63 1/2
Total Distance		303 1/2



A Draught of a Tract of Land Containing One hundred and forty nine Acres & 19 perches, with an Allowance proportioned to 6 P Cent Survey'd for John McClain the 10th of Nov. 1769. In pursuance of an Application or Order of Survey dated April the 3^d 1769 and Numbred 261, Situate on Loyalhannan Creek Including an Indian Incampment, about three miles below the mouth of Crabtree Run

To John Lukens Esq^r

P. Robert McCrea

S. Genl

D.S.

IN TESTIMONY that the above is a copy of the original remaining on file in the Department of Internal Affairs of Pennsylvania, made conformably to an Act of Assembly approved the 16th day of February, 1833, I have hereunto set my Hand and caused the Seal of said Department to be affixed at Harrisburg, this eighth day of August 1904

Grace D. Brown
Secretary of Internal Affairs